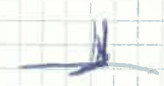
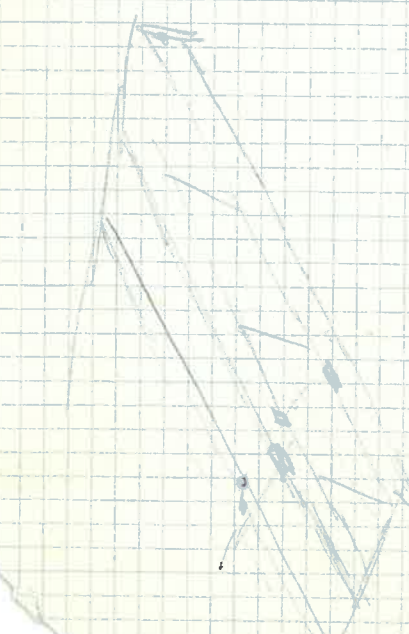


GABLE END



2x12 RIDGEBOARD

3/12 PITCH

2x6 RAFTERS

DOUBLE TOP PLATE

GABLE END STUDDED 16" O.C. OR 24" O.C.

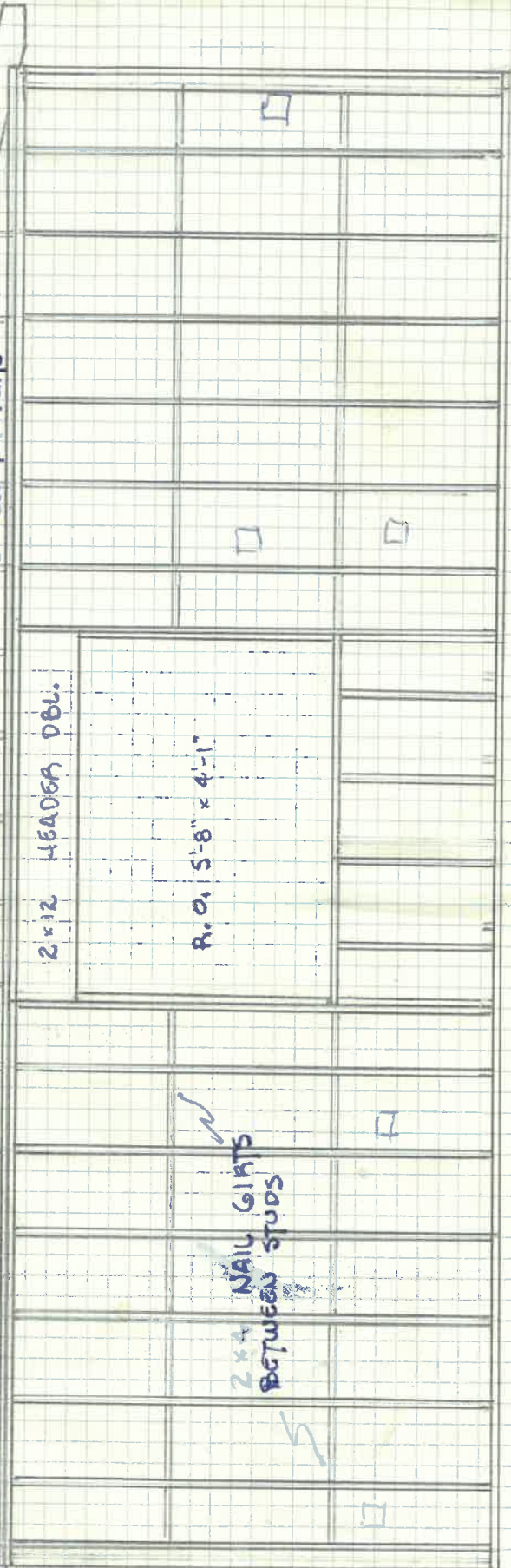
2x12 HEADER DBL.

R.O. 5'-8" x 4'-1"

2x4 NAIL GIRTS BETWEEN STUDS

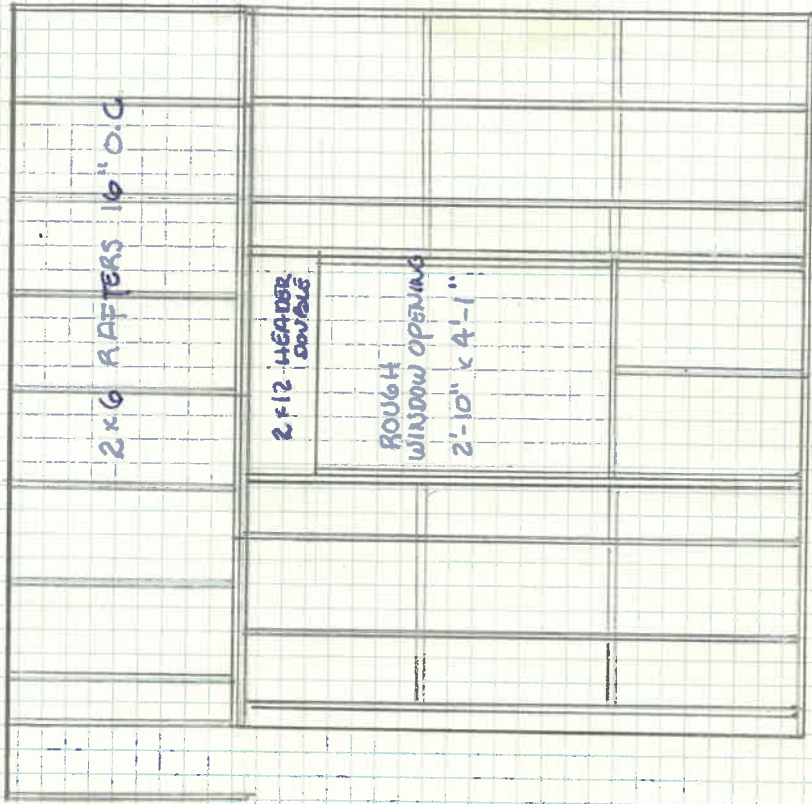
1x6 ROUGH SPAIN CEDAR TO BE USED AS FACIA

RAFTERS CUT BACK TO USE 1x12 CEDAR AS SOFFIT

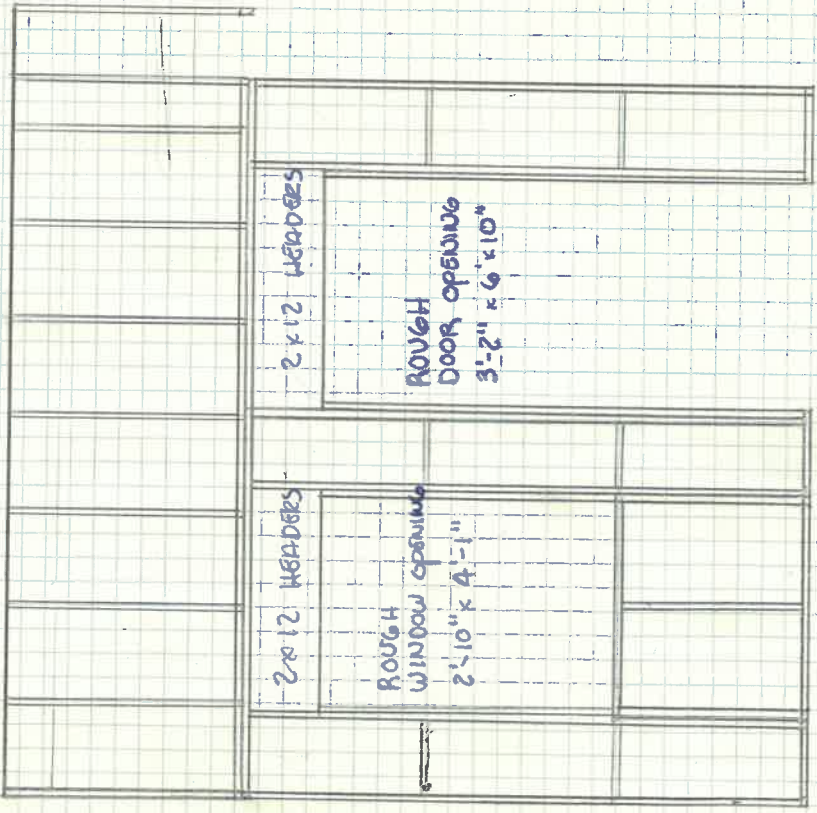
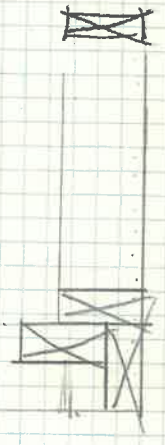


24'-0"

599 Freedom SCALE - 3/8" = 1'



10'-0"



10'-0"

SIDES

2 - EAGLE EXTERIOR PRIMED WINDOW UNIT
ROUGH OPENINGS 2'-10" x 4'-1"

1 - SAME - ROUGH OPENING 5'-0" x 4'-1"

STUDS - 16" O.C. 2"x4"

RAFTERS - 16" O.C. 2"x6"

1 - DOOR OPENING FOR 3'-0" x 6'-8"
ROUGH OPENING 3'-2" x 6'-10"

EXISTING BUDG:

ADDITION

